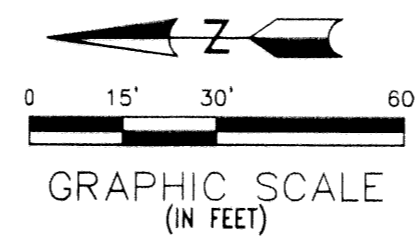


SORRELL'S ACRE

BEING A REPLAT OF PART OF LOT 7, BLOCK 4, PLAT NO. 1 OF PALM BEACH PLANTATIONS
 LYING IN SECTION 7, TOWNSHIP 44 SOUTH, RANGE 43 EAST, RECORDED IN PLAT BOOK 10, PAGE 20, VILLAGE OF PALM SPRINGS, PALM BEACH COUNTY, FLORIDA

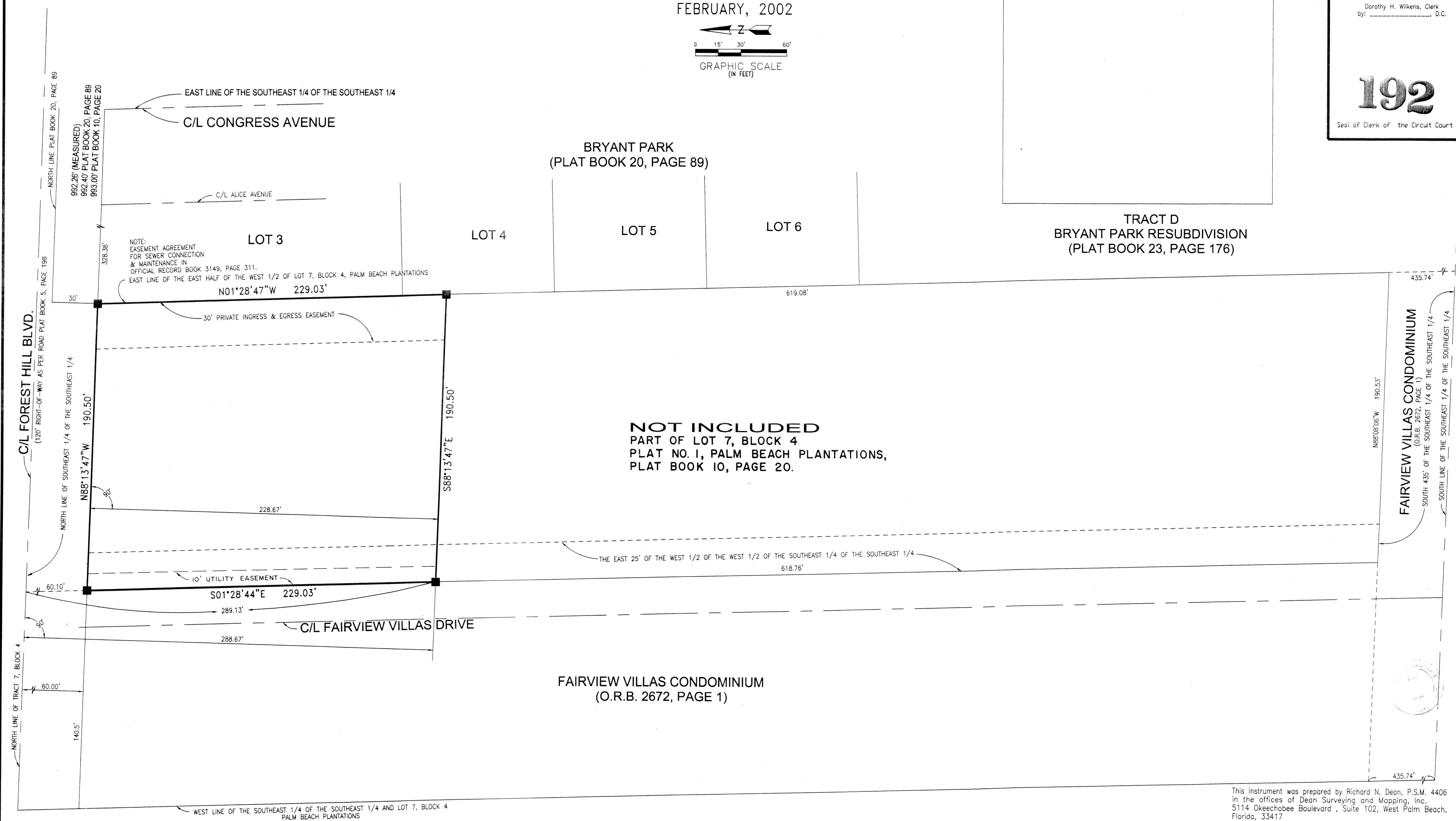
SHEET 2 of 2
 FEBRUARY, 2002



State of Florida
 County of Palm Beach
 This Plat was filed for
 Record this _____ Day
 of _____, A.D. 2002
 and duly recorded in
 Plat Book _____ on
 Page _____
 Dorothy H. Wilkens, Clerk
 by: _____, D.C.

192

Seal of Clerk of the Circuit Court



Legend

- D = Delta, Central angle
- A = Arc Length
- R = Radius
- P.R.M. = Permanent Reference Monument L.B. 6936
- U.E. = Utility easement
- O.R.B. = OFFICIAL RECORD BOOK

NOTICE: THIS PLAT, AS RECORDED IN ITS GRAPHIC FORM, IS THE OFFICIAL DEPICTION OF THE SUBDIVIDED LANDS DESCRIBED HEREIN AND WILL IN NO CIRCUMSTANCES BE SUPPLANTED IN AUTHORITY BY ANY OTHER GRAPHIC OR DIGITAL FORM OF THE PLAT. THERE MAY BE ADDITIONAL RESTRICTIONS THAT ARE NOT RECORDED ON THIS PLAT THAT MAY BE FOUND IN THE PUBLIC RECORDS OF THIS COUNTY.

NOTE:
 ALL DISTANCES AND BEARINGS ARE FIELD MEASURED AND ARE COINCIDENT WITH "PLAT AND DESCRIPTION DATA UNLESS OTHERWISE NOTED."
 WRITTEN DIMENSIONS TAKE PRECEDENCE OVER SCALED DIMENSIONS AND DISTANCES ARE NOT TO BE SCALED FOR CONSTRUCTION AND/OR DESIGN PURPOSES.

This instrument was prepared by Richard N. Dean, P.S.M. 4406 in the offices of Dean Surveying and Mapping, Inc. 5114 Okeechobee Boulevard, Suite 102, West Palm Beach, Florida, 33417

Dean Surveying and Mapping, Inc.
 "The Measuring Line Shall Go Forth" Jeremiah 31:39
 5114 Okeechobee Blvd.
 Suite 102
 West Palm Beach, Florida. Facsimile (561)626-4558
 Tel: (561)625-8748

A REPLAT OF PART OF LOT 7, BLOCK 4 PALM BEACH PLANTATIONS

C.A.D.D.	DJM	Checked R.N.D.	Date	06-01-2001
Field	P.S.G.		Job No.	
Scale 1" = 30'	Sheet 2 of 2			00-920